

**Smart Kids**



# **Unit 5 How Do You Go to School?**

## **Lesson 3 Say It Out**



## How Do You Go to School?

How do you go to school?

I go to school by bicycle.

(by bus/on foot)

Go up, go down.

Go left, go right.

Ding-Ding-Ding-Ding.

(Ba-Ba-Ba-Ba/Da-Da-Da-Da)

Here we are.



# Review Time

*Say it Out*

**Answer and circle**



What can you see?





# Review Time

*Say it Out*

**Choose the correct answer**

1 I go to school \_\_\_\_\_.



- a. on foot      b. on bus      c. by bus

2 \_\_\_\_\_ do you go to the park?

- a. What      b. How      c. Who

3 I go home \_\_\_\_\_.



- a. by foot      b. with foot      c. on foot

# Let's Talk and Learn

*Say it Out*

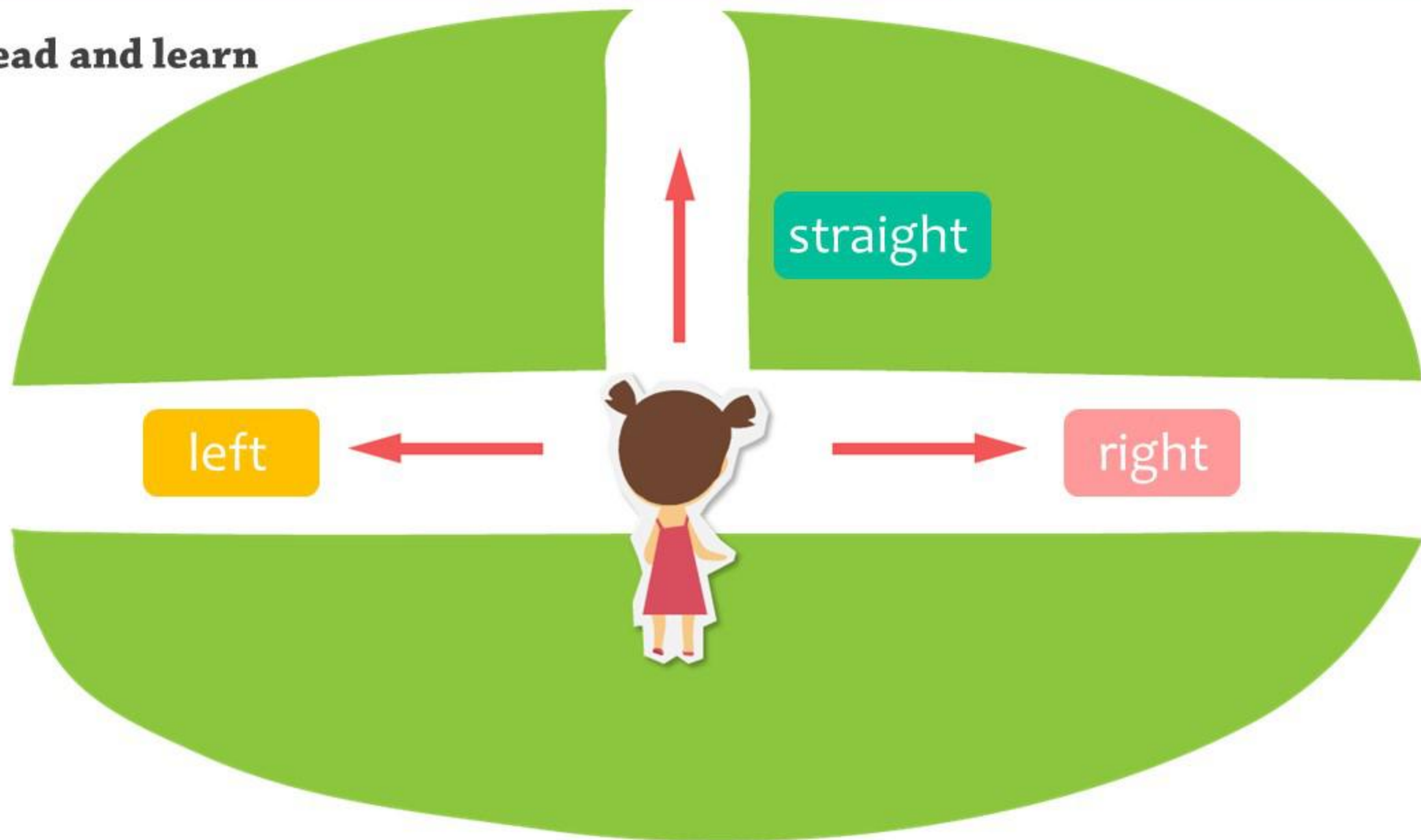
**Listening**



- Excuse me, where is the park?
- Go straight and then turn left.
- Where is the school?
- Turn right, go straight and then turn left.



**Read and learn**



## Read and learn



turn left



go straight



turn right



# Let's Practice

*Say it Out*

**Listen and do the action**

Raise your right hand!

OK.





# Let's Practice

*Say it Out*

## Describe the route



e.g. Go straight and **then** turn left.



go straight

turn left

turn right

# Let's Talk and Learn

*Say it Out*

## Read and learn



Excuse me



Where is...?

- Excuse me, where is the park?
- Go straight and then turn left.
- Where is the school?
- Turn right, go straight and then turn left.



# Let's Practice

*Say it Out*

**Listen and circle**



Where is...?





# Let's Practice

*Say it Out*

**Choose the correct answer**

1. \_\_\_\_\_ day is it today?



2. \_\_\_\_\_ is your school?



3. \_\_\_\_\_ do you go to school?



4. \_\_\_\_\_ is this?



A

Who

B

What

C

How

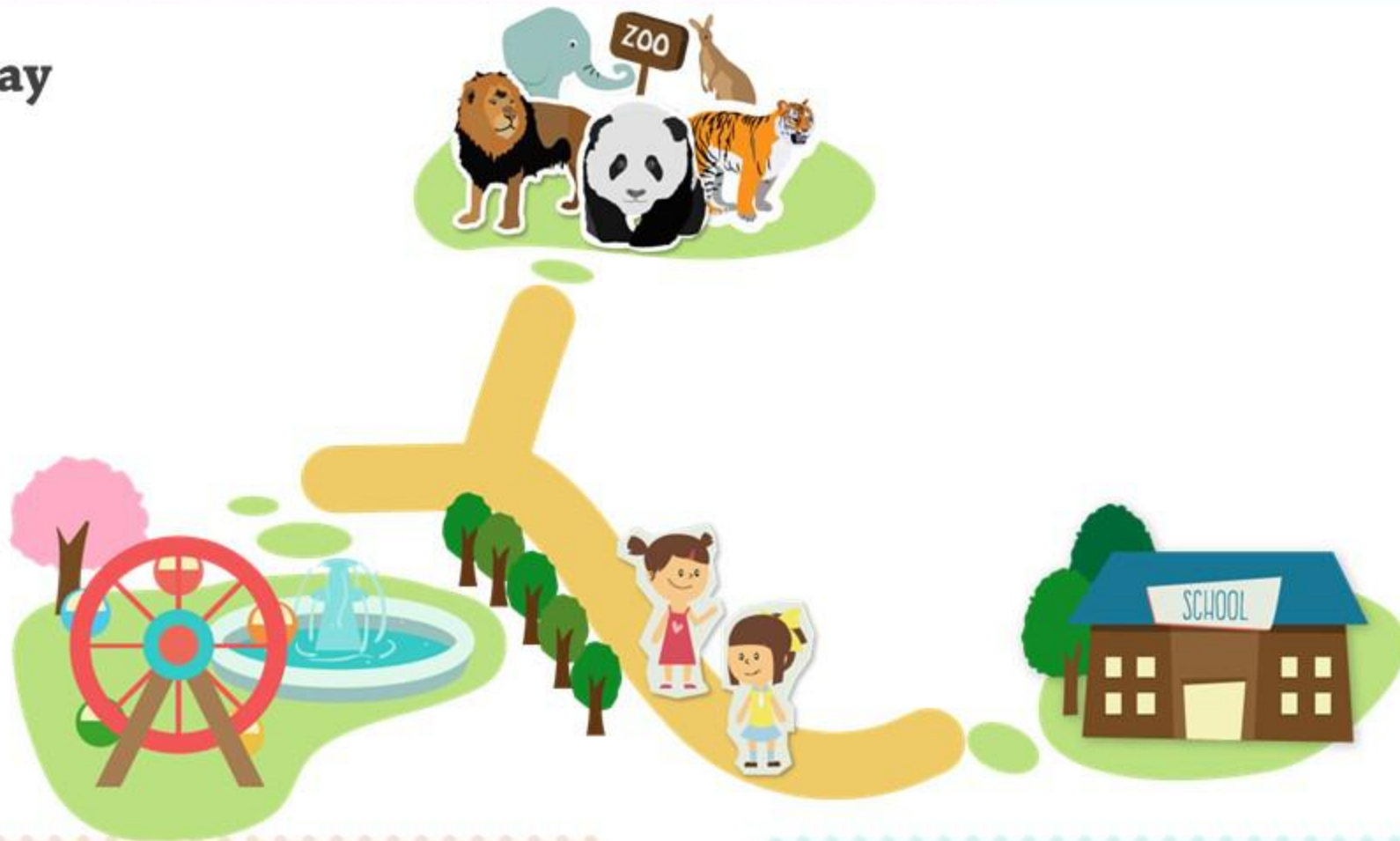
D

Where

# Let's Practice

*Say it Out*

**Look and say**



- Excuse me, where is the park?
- Go straight and then turn left.

- Excuse me, where is the zoo?
- ...

# Let's Practice

*Say it Out*

**Answer the questions**

