

# DAILY ENGLISH

**E10**

Children's Day is a day when people celebrate children's happiness and health.





## *Lead-in*

1. How many public holidays does your country have?
2. Name 3 holidays you like to celebrate.



# Target Language

▼ In this lesson, we will learn:

## Grammar Focus

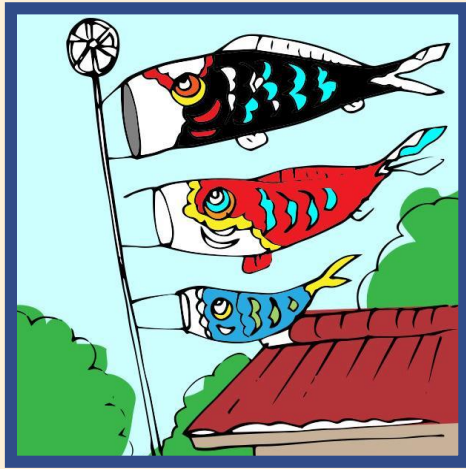
Relative Clause of Time

## Daily Expression

Children's Day is a day when people celebrate children's happiness and health.

# Picture Description

▼ Tell what you see in the pictures below.



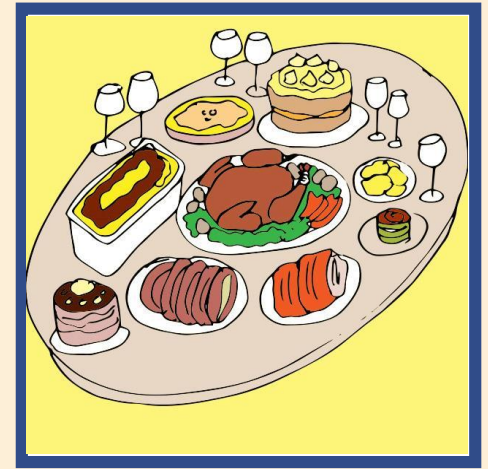
A



B



C



D

# Pronunciation and Matching

▼ Read the example sentences.

1. Children's Day is a day when people celebrate children's happiness and health.

2. Mother's Day is a day when people in many countries honor mothers.

3. New Year's Day is a day when people make resolutions.

4. Thanksgiving is a day when people celebrate the harvest.

▼ Match the sentences with the corresponding pictures.



# Conversation

▼ *Listen to the conversation.*

Jennifer: What is your favorite holiday in Japan, Naoto?

Naoto: I like Children's Day.

Jennifer: What do you like about it?

Naoto: Well, **it's a day when people celebrate children's happiness and health.**

Jennifer: That's interesting!

Naoto: Yes, we celebrate this holiday every year.

## Questions:

- What is Naoto's favorite holiday in Japan?
- What is this holiday about?
- Do Naoto and his family celebrate this holiday?

## Grammar Focus

▼ Read the grammar structure.

### Relative Clause of Time

Children's Day is a day

people celebrate children's happiness and health.

Mother's Day is a day

people in many countries honor mothers.

New Year's Day is a day

+ when +

people make resolutions.

Thanksgiving is a day

people celebrate the harvest.

## Grammar Check

▼ Add the phrase in parentheses to the sentence using the relative clause of time.

1. Halloween is a day (people wear scary costumes).

2. Graduation is a day (students officially complete a degree).

3. Birthday is a day (people celebrate the day they were born).



## Grammar Check

▼ Add the phrase in parentheses to the sentence using the relative clause of time.

4. February 14th is a day (people give cards to the ones they love).

5. Christmas is a day (when people hold reunions/gatherings).

# Grammar Check

▼ Write what happens in each season to complete each sentence.



Spring is the season \_\_\_\_\_.



Summer is the season \_\_\_\_\_.



Fall is the season \_\_\_\_\_.



Winter is the season \_\_\_\_\_.



## Daily Scene

List down your top 5 favorite holidays in your country. Then, write what you do on these days using the relative clause of time.

1.

---

---

---



2.

---

---

---



3.

---

---

---



4.

---

---

---



5.

---

---

---

