

DAILY ENGLISH

E08

There was an earthquake.

The background image shows a street scene after a disaster. On the left, a multi-story building has been severely damaged, with its upper floors partially collapsed, exposing the internal wooden structure and debris. Debris is piled up on the ground in front of the damaged building. To the right, a row of intact, light-colored buildings with dark window frames lines the street. In the foreground, two firefighters in full protective gear, including helmets and jackets with reflective stripes, are visible. One firefighter is in the center, and another is to the right. The sky is clear and blue.

Lead-in

1. What natural disasters are common in your country?
2. What was the most recent natural disaster that happened in your country?

Target Language

▼ In this lesson, we will learn:

Grammar Focus

There was a/an + noun

Daily Expression

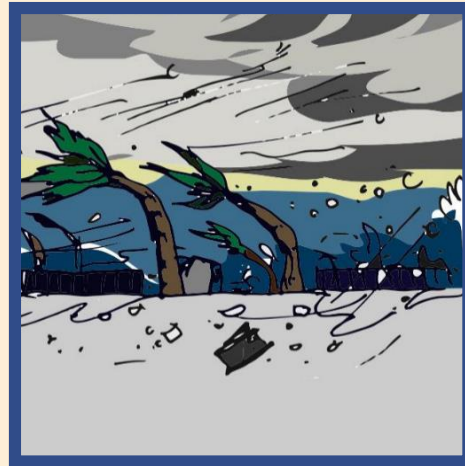
There was an earthquake.

Picture Description

▼ Tell what you see in the pictures below.



A



B



C



D

Pronunciation and Matching

▼ Read the example sentences.

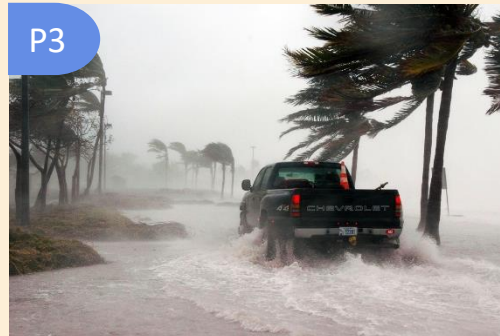
1. There was an earthquake.

2. There was a typhoon.

3. There was a landslide.

4. There was a flood.

▼ Match the sentences with the corresponding pictures.



Conversation

▼ Listen to the conversation.

Serena: Did you watch the news?

Kanta: What was the news about?

Serena: **There was an earthquake** that hit Tokyo.

Kanta: How bad was it?

Serena: Many buildings were destroyed.

Kanta: That's terrible.

Questions:

- What natural disaster happened?
- Where did it hit?
- How big was the damage?

Grammar Focus

▼ Read the grammar structure.

There was a/an + noun

There was + a/an {
flood.
typhoon.
landslide.
earthquake.

Grammar Check

▼ Tell what happened in each picture.



1 There was a flood.



2



3



4



5

Grammar Check

▼ Read and guess the disaster.



1. The ground suddenly shook.

→



2. Strong winds are blowing with heavy rain.

→



3. Two cars crashed into each other.

→



4. A building caught on fire.

→



5. The road was covered with water.

→

Daily Scene

Make a short news report using the learned expression.

There was an earthquake in Tokyo, Japan.
It happened at 1:00 pm.



WHAT	1 Earthquake
Where	Tokyo, Japan
When	At 1:00 pm

What	2 Typhoon
Where	Cebu, Philippines
When	At 4:00 pm

What	3 Landslide
Where	Shimla, India
When	At 9:00 am

What	4 Flood
Where	Shanghai, China
When	At 5:00 am