

Lesson 05

Is That Your Bike?



Is this your ...?



Listen to the dialogue.

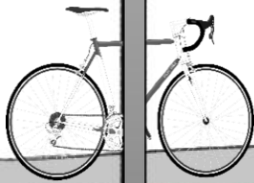
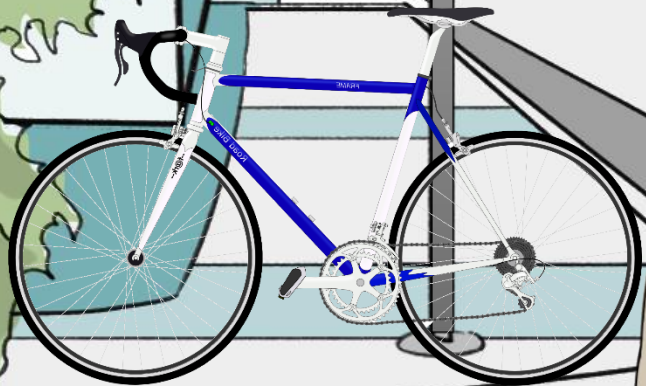
Dialogue

Aya: Bo, is this your bike?

Bo: No, it isn't. This bike is blue.
My bike is black.

Aya: That bike is black.
Is that your bike?

Bo: Yes, it is.

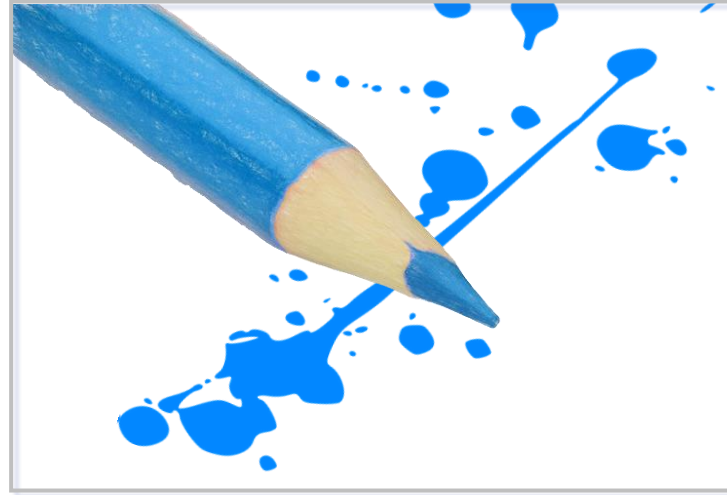


Listen, repeat and learn.

Words



bike



blue



black

Do a role-play.

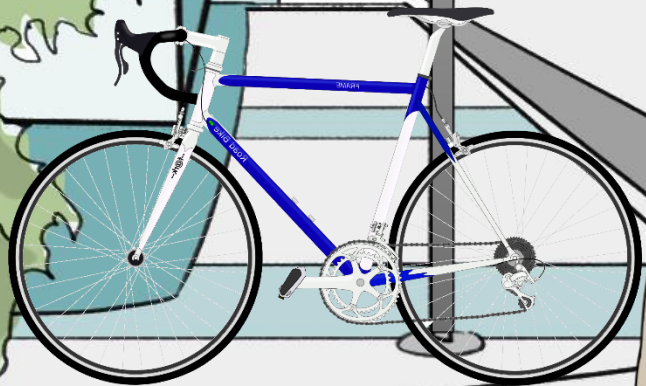
Dialogue

Aya: Bo, is this your bike?

Bo: No, it isn't. This bike is blue.
My bike is black.

Aya: That bike is black.
Is that your bike?

Bo: Yes, it is.



Complete the sentences.

Check



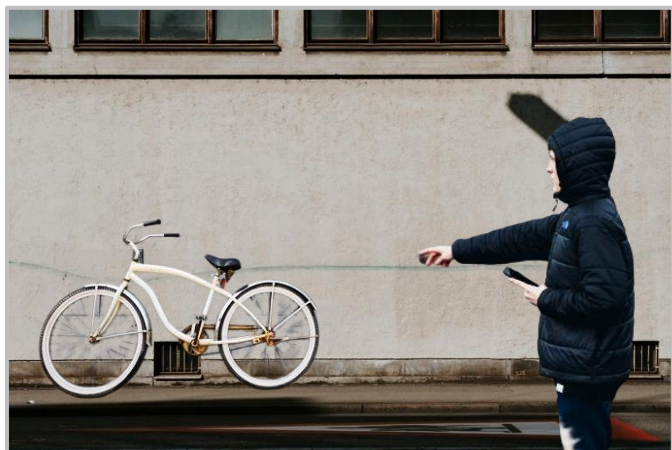
that bike

this bike

1. This bike is color _____.

2. That bike is color _____.

3. Bo's bike is color _____.



Is that your bike?

Yes, it is.



Is that your bike?

No, it isn't.



Listen, repeat and learn.

Expressions



My book is blue.



That book is black.

this vs. that

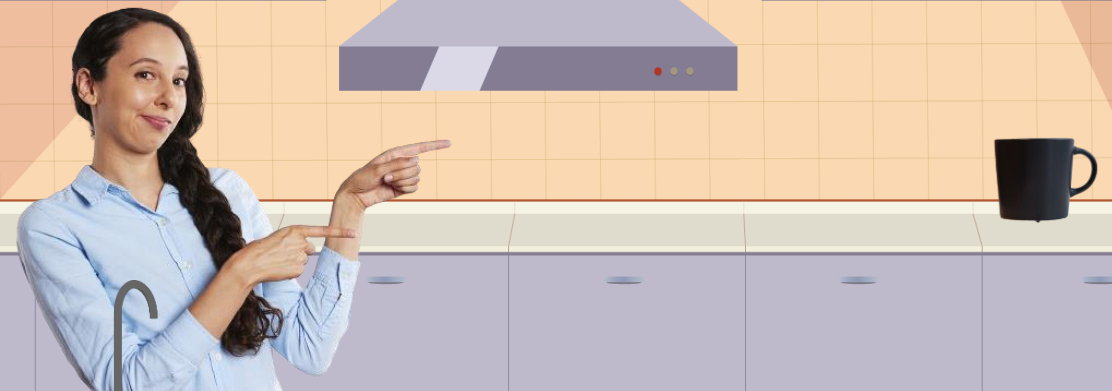
This is a cup.

This cup is blue.



That is a cup, too.

That cup is black.



Make some sentences.

Check

This ... is ...

That ... is ...



3



4



1

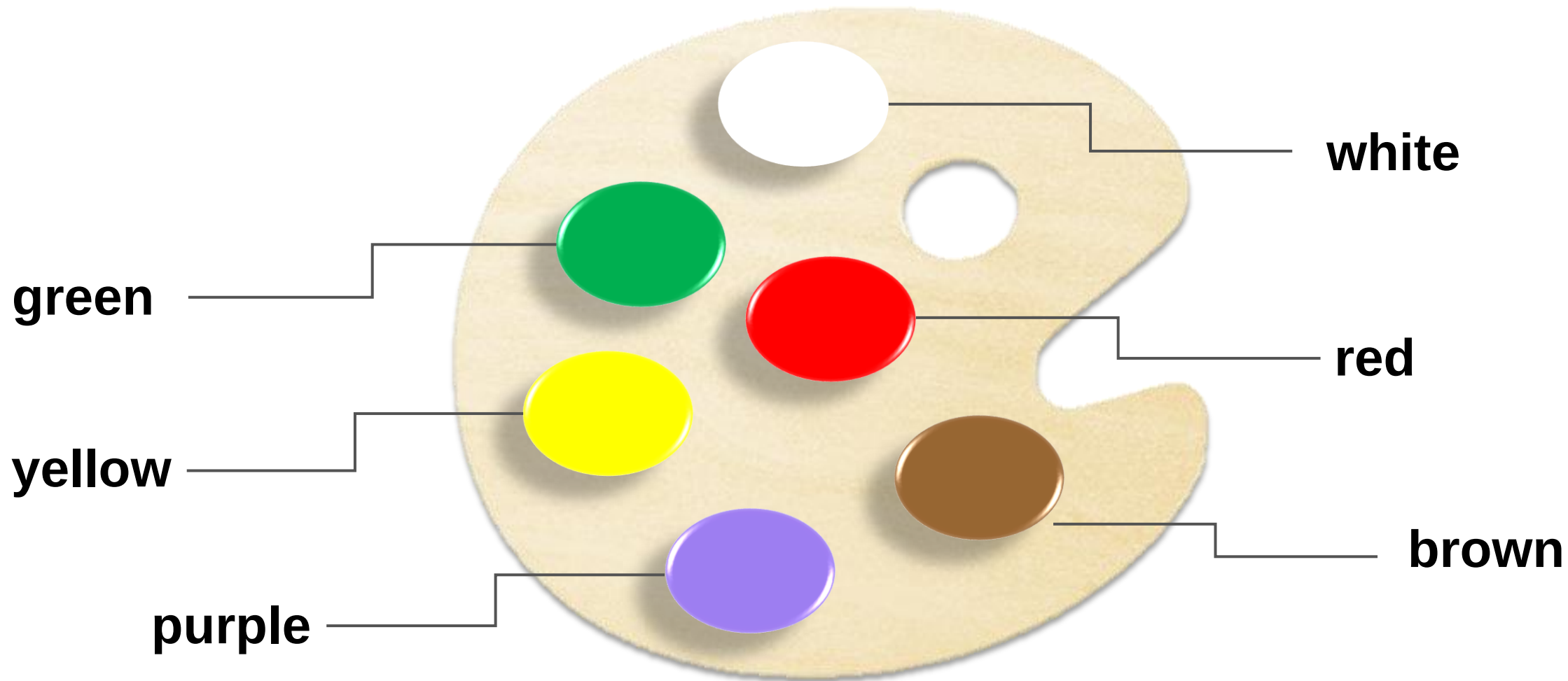


2



Listen, repeat, and learn.

Colors



Fill in the blanks, and do a role-play.

Role-Play

Is that your _____?

No, it _____.

That _____ is _____.

My _____ is _____.

You lost your black cup in
your office.