

He is inside the bedroom.



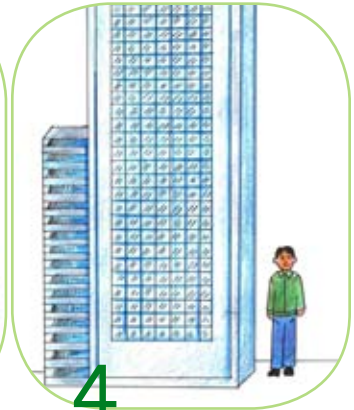
1



2

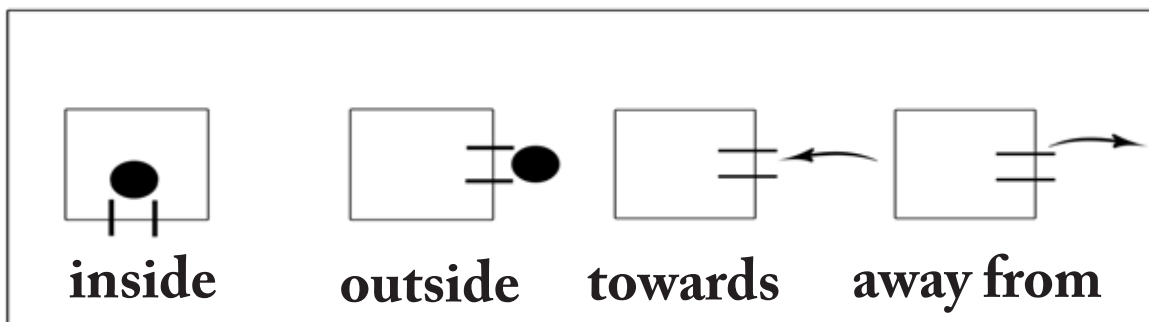


3



4

Vocabulary



Conversation

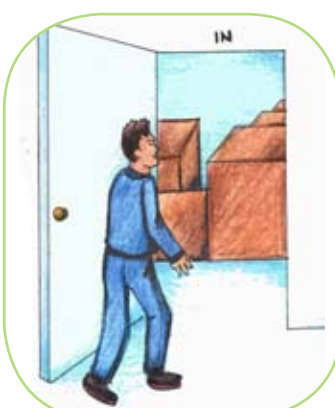
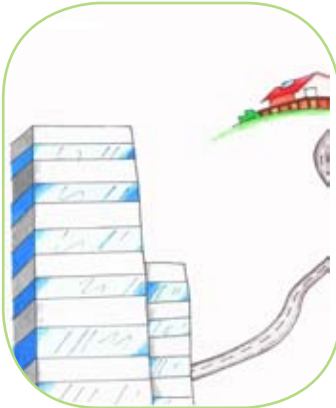
A: Where is the man?

B: He is inside the bedroom.

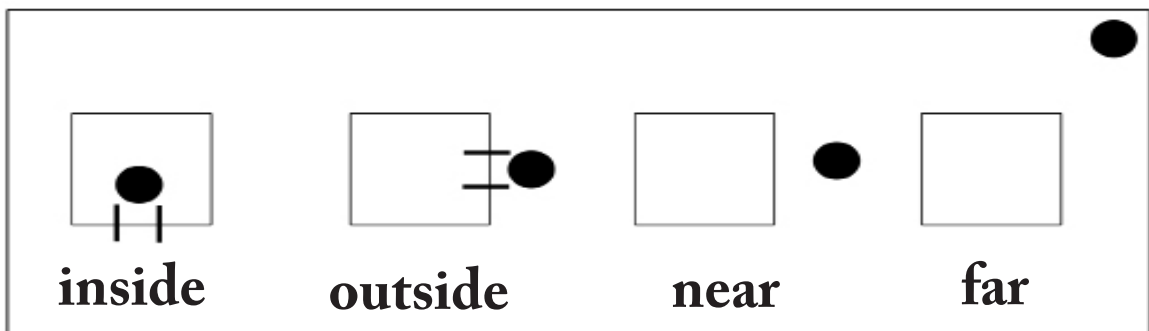
Questions

1. Where is the man in picture number 2?
2. Where is the man in picture number 3?
3. Where is the man in picture number 4?

Kannta's office is far from his house.



Vocabulary



Conversation

A: Is Kannta's office near his house?

B: No, it isn't. Kannta's office is far from his house.

Questions

1. Are the businessmen away from each other?
2. Where is the secretary going?
3. Where is the man going?

Lesson D3

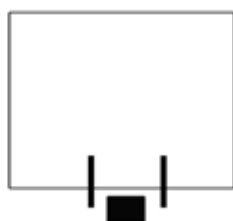
They are standing in front of the restaurant.



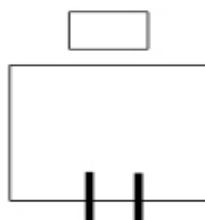
Vocabulary



against



in front



behind



next to

Conversation

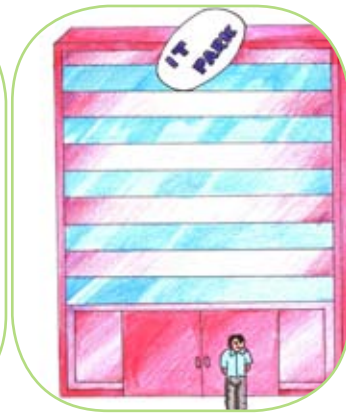
A: Where are the couples?

B: They are standing in front of the restaurant.

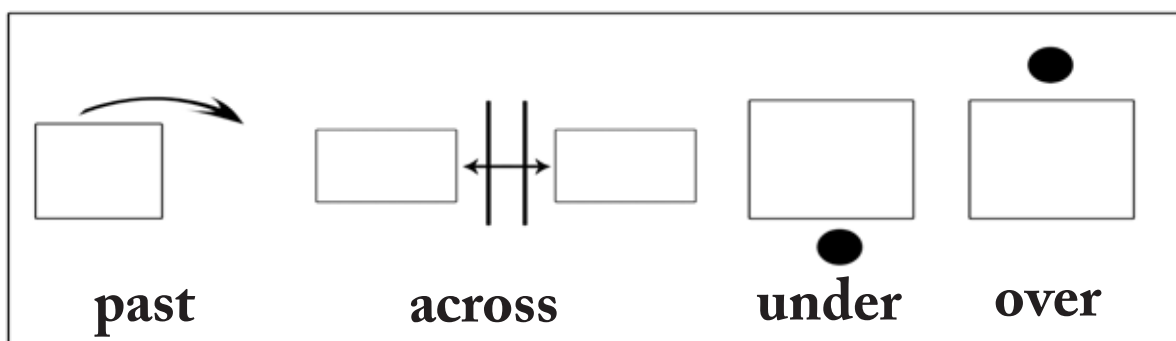
Questions

1. Where is the location of the woman in the first picture?
2. Where is the location of the woman in the second picture?
3. Where is the location of the woman in the third picture?

The library is across the park.



Vocabulary



Conversation

A: Is the library next to the park?

B: No, it isn't. The library is across the park.

Questions

1. Is the man walking across the I.T. building?
2. Is the sailboat over the bridge?
3. Is the man under the bridge?

The bus station is beside the supermarket.



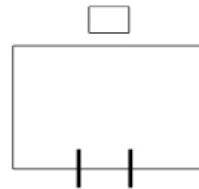
Vocabulary



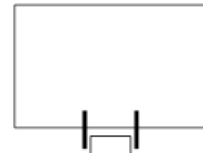
**at the left
side of**



**at the right
side of**



**at the
back of**



**in
front of**

Conversation

A: Where is the supermarket?

B: The bus station is beside the supermarket.

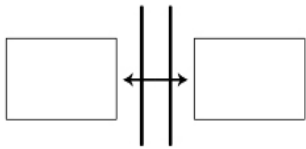
Questions

1. Where is the post office?
2. Where is the library?
3. Where is the pharmacy?

The book is under the table.



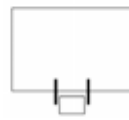
Vocabulary



across from



**at the
corner of**



under



**on the
side of**

Conversation

A: Where is the book?

B: The book is under the table.

Questions

1. Where is the car parked?
2. Where is the house located?
3. Where is the park?

The annual meeting is in December.



Vocabulary

IN	ON	AT
in December	on Sunday	at 9am
in January	on December 25th	at 10 in the morning
in March	on Sunday	at 12nn

Conversation

A: When is the annual meeting?

B: The annual meeting is in December.

Questions

1. When is your meeting?
2. When is our manager's birthday?
3. When is your dinner with your boss?

My friend has worked in India since 1991.



Vocabulary

FOR	SINCE
for 2 years	since 1991
for 8 years	since December
for 10 months	since yesterday

Conversation

A: How long has your friend worked in India?

B: My friend has worked in India since 1991.

Questions

1. How long have you prepared your report?
2. How long will the CEO be in France?
3. How long was the manager of QQ hotel on vacation?

He has worked for QQEnglish for 10 months.



Vocabulary

They/We/You/I	have worked for QQEnglish for 10 months.
	have lived in Canada for 9 years.
She/He	has worked for BYG company for 20 years.
	has lived in San Francisco for 30 years.

Conversation

A: How long has Mr. Taylor worked for QQEnglish?

B: He has worked for QQEnglish for 10 months.

Questions

1. How long have the couples lived in Canada?
2. How long has Mrs. Swift taught English?
3. How long has Akiko learned English?

Mr. Taylor has been negotiating with the XBY company for 2 months.



Vocabulary

They/We/You/I	have been negotiating with the XBY company for 2 months.
	have been teaching Accounting for 13 years
She/He	has been working in the restaurant for 4 years.
	has been traveling for 30 years.

Conversation

- A: How long has Mr. Taylor been negotiating with the XBY company?
- B: Mr. Taylor has been negotiating with the XBY company for 2 months.

Questions

1. How long has Kannta been teaching Accounting?
2. How long has Mr. Hanes been preparing for the presentation?
3. How long have Mr. Hanes and Mr. Smith been on business trip?